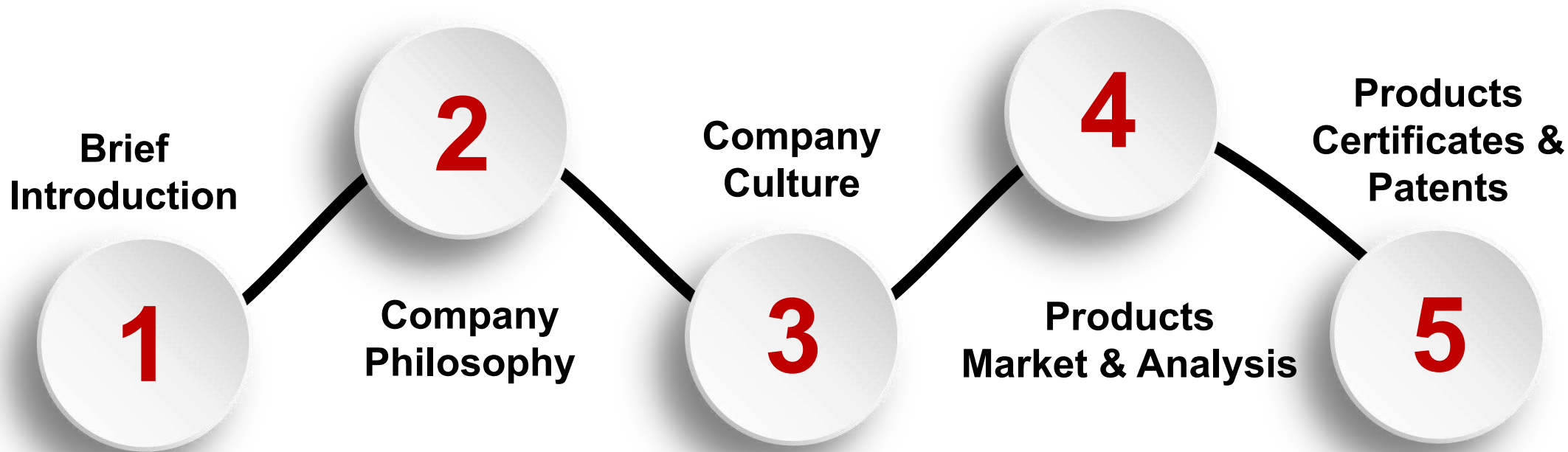


YUANZE RELAYS

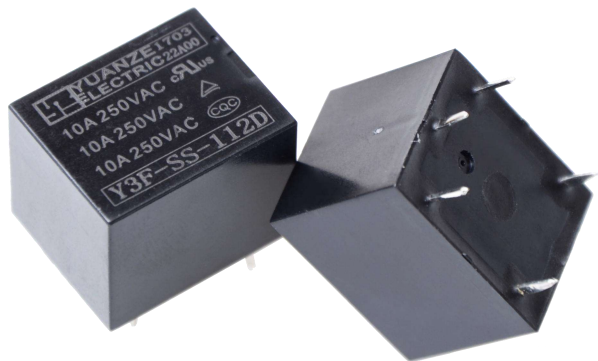
---- Company Profile



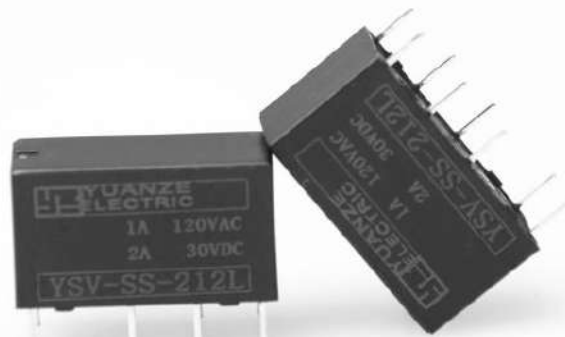


YUANZE is a developing enterprise combining with R&D, Producing, Selling special for all kinds of relays. The main products are covering High-voltage DC Relay, Signal Relay, General Power Relay, Automotive Relay, Magnetic Latching Relay and Photovoltaic Relay. Recognize Yuanze more clearly from the following.

- **Over 12 years** experience in Relay line,
- Efficiency R&D and technology team **total 75 persons**,
- **43 Automatic Assembly lines** located in dust-free plants,
- **52 Series** containing over **1,000 kinds** of products,
- Production Capacity of **1.5 Million pcs of Relays per day**,
- Self-sufficiency for the key parts and mental parts of the relays ensure the quality of the products,
- **ISO9001 ISO14001 IATF16949 certificate** has been achieved **over 10 years**,
- Nearly all the type of the relays have been approved by UL, TUV and CQC and VDE in the progress,
- Quality Goal of Improving Quality Constantly based on People Oriented and by means of Credit & Pragmatic and Principle mastering future.



General Power Relay Series



Signal Relay Series



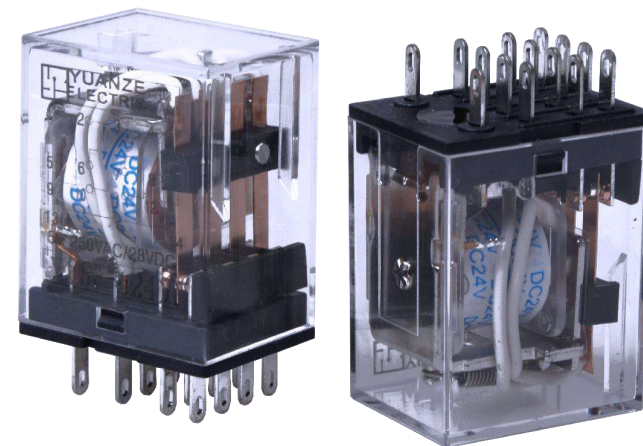
Automobile Relay Series



High-Voltage DC Relay Series



Latching Relay Series



Industrial Control Relay Series



规则

有物有则，顺之而为

原则

为商有道，有所为有所不为

责任

做有责任心的人，负责任的做事



则一定未来

Honesty Casts Quality

Innovation Leads the Future



Employee First

- 1、Pay close attention to employee' s growth
- 2、Pay close attention to employee' s health
- 3、Pay close attention to employee' s ideas
- 4、Pay close attention to employee' s mentality
- 5、Pay close attention to employee' s demands

Vision of Company: You can find Yuanze where there are electrical appliances.

Core Value of Company: People Oriented, Integrity and pragmatic are the bases of the company, improving quality constantly by principle for the future.

Business Philosophy: Growing up with employee and developing with clients.





Comrades and friends :

First of all, thank you so much for your paying close attention to Yuanze.

It is an extraordinary time currently, especially in the period of COVID-19, and all walks of life are facing tremendous challenge. Yuanze is always against it positively as we have a good team and all the staff take their responsibility without any complaints.

We experienced so much in the past, success and failure, glory and setback, but, we never give up and are being brave in it on the contrary.

I would like to take the liberty to thank all of your distinguished customers and our colleagues. We hope we have an opportunity to cooperate with you and serve you second to none.

R&D and Technician are always close to the market and customers,

Supply the right products and save cost for our customers,

Follow up the the tendency of new technology closely, and improve the facilities on time,





- 1 Control and manage the workshops standardizing and fining,
- 2 Quality Control and Process Control are performed fining and quantization,
- 3 "People Oriented" is the core in 7S management system,
- 4 Emphasize the interflow and cooperating, and find solution together,



QC/HSE Policy

Quality -- The Eternal Theme

Focusing on Quality Control and meeting customer's demands and requests is the company goal

Quality First

Keep Improving

Continuous Developing

质量目标



IQC » 99.5%

IPQC » 98%

Defect ratio in Customer $\leq 20\text{PPM}$

Top Standard

Elaborating

Zero Defect

↓
Serve you with
following attitude

- Humble and Cautious
- Pragmatic and Innovating
- Professional and High Quality
- Serve you carefully



I, High professional producing capacity over with experiences of 12 years

II, Advanced and professional Automatic Assembly lines ensure the high Quality

III, High Price-Quality ratio meet customer requests

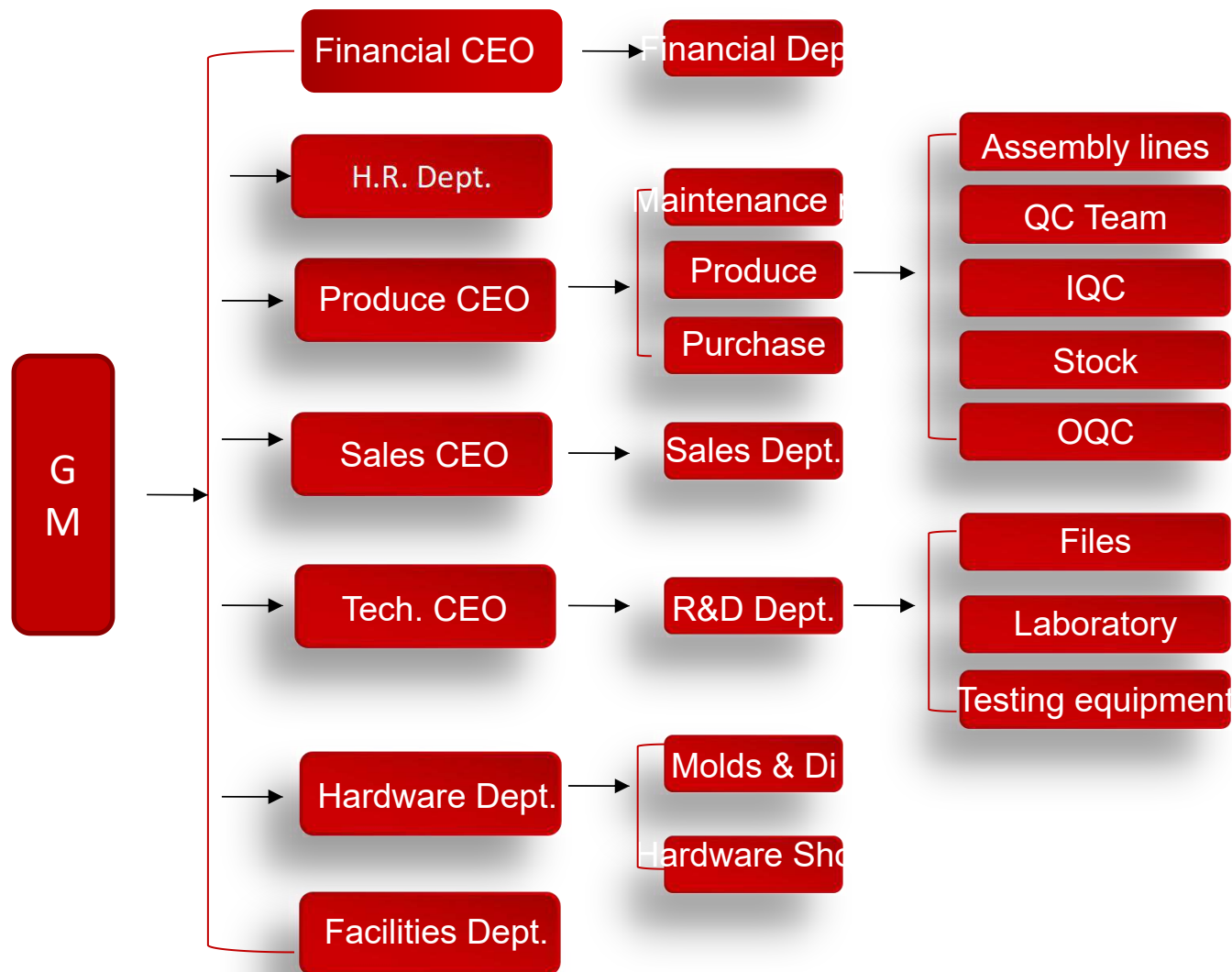
IV, Efficiency technology team and heavy capacity of manufacturing workshop

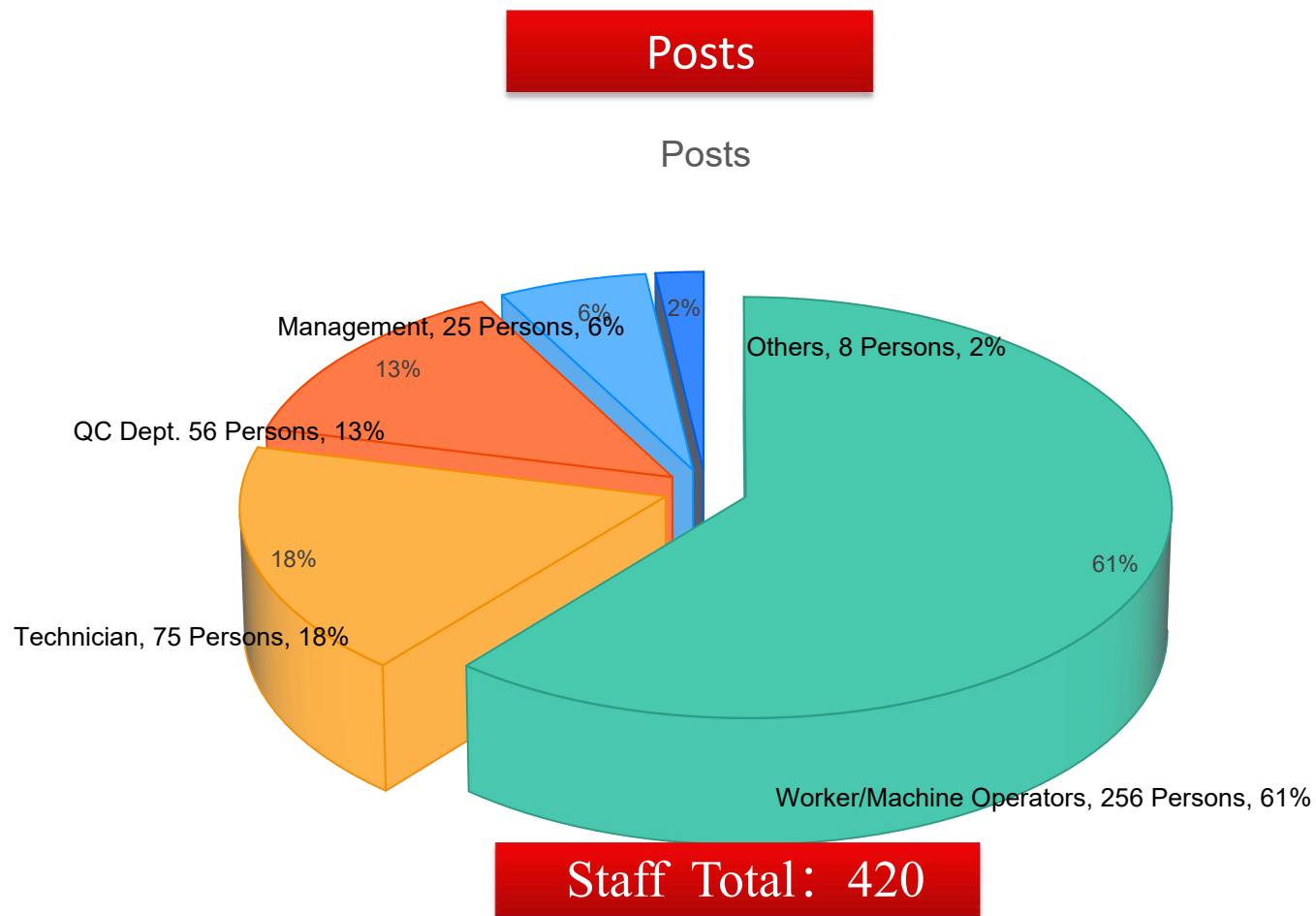
V, Safety stock for standard types to ensure the customers' urgent demands

VI, Having the ability of designing and manufacturing for special requirements according to customers

VII, Full-service containing design and technical support, etc.

>>>Organization Chart<<<





Younger

Professional

Ambitious

Efficiency

We are a younger team with full energy of youthful spirit and creating

We are a professional team with experiences of designing and producing relays

We are dedicated team with strong faith on branded products

We are a team with dreams and because of it we are work together from all over the world

努力到无能为力，拼搏到感动自己！



In order to provide services to foreign customers conveniently and quickly, we currently have traders cooperating with us in Europe, Asia, North America and South America.



America

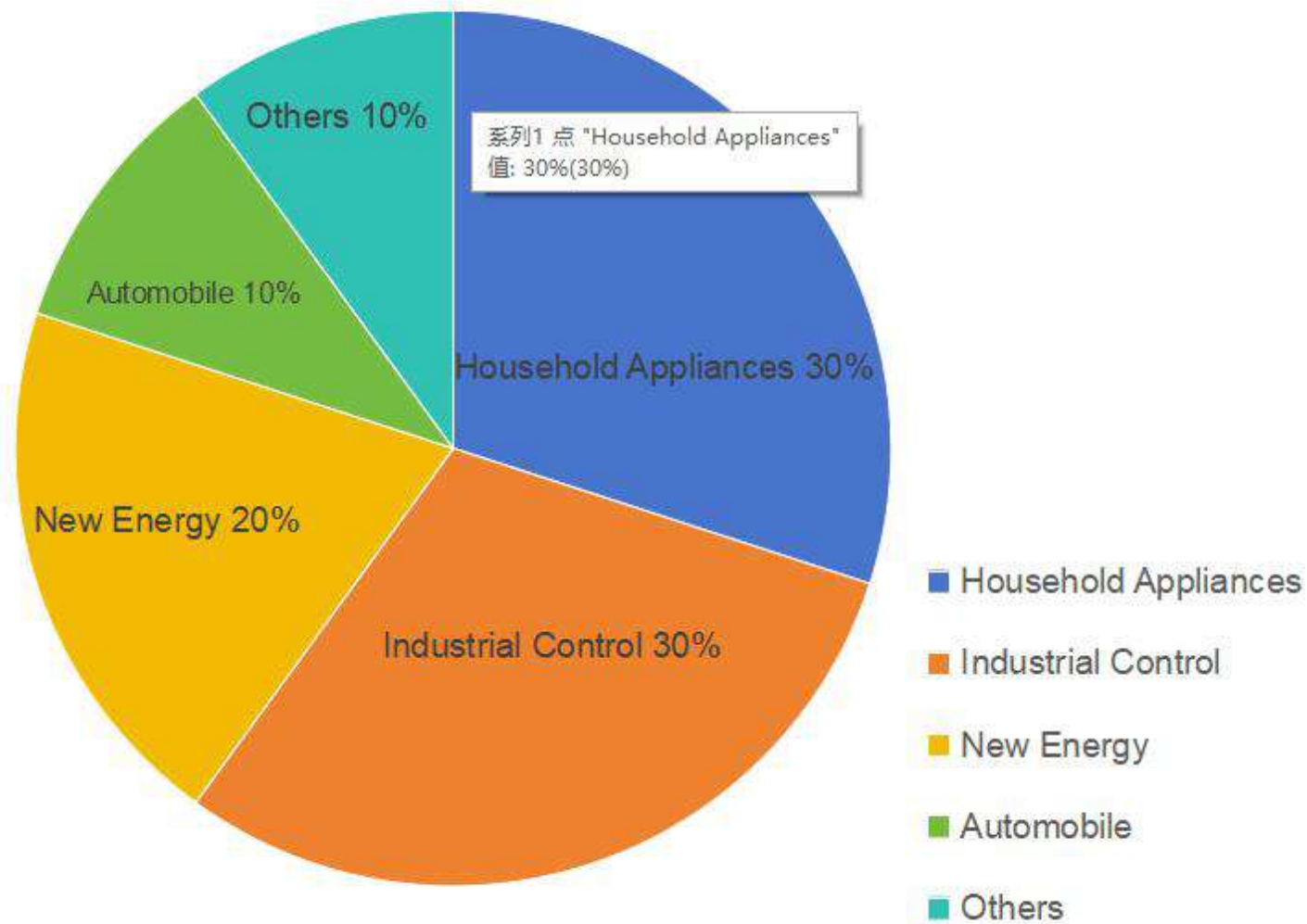
Spain

Italy

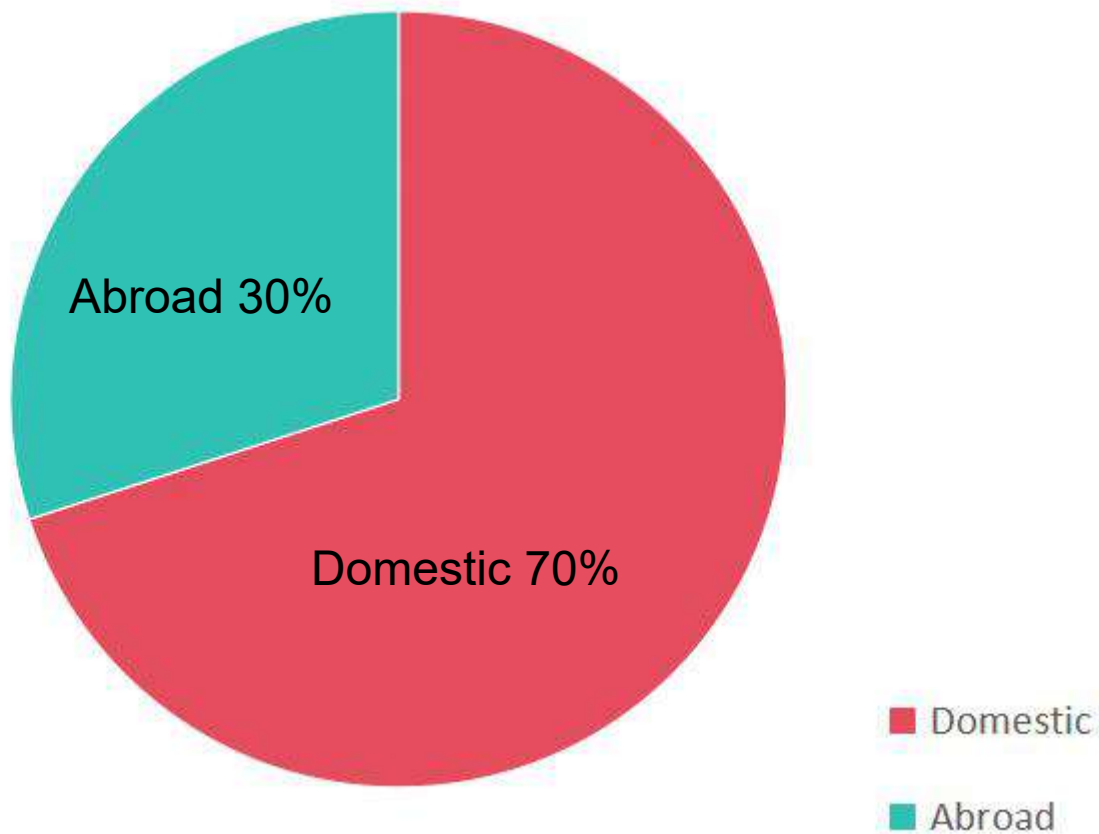
India

Brazil

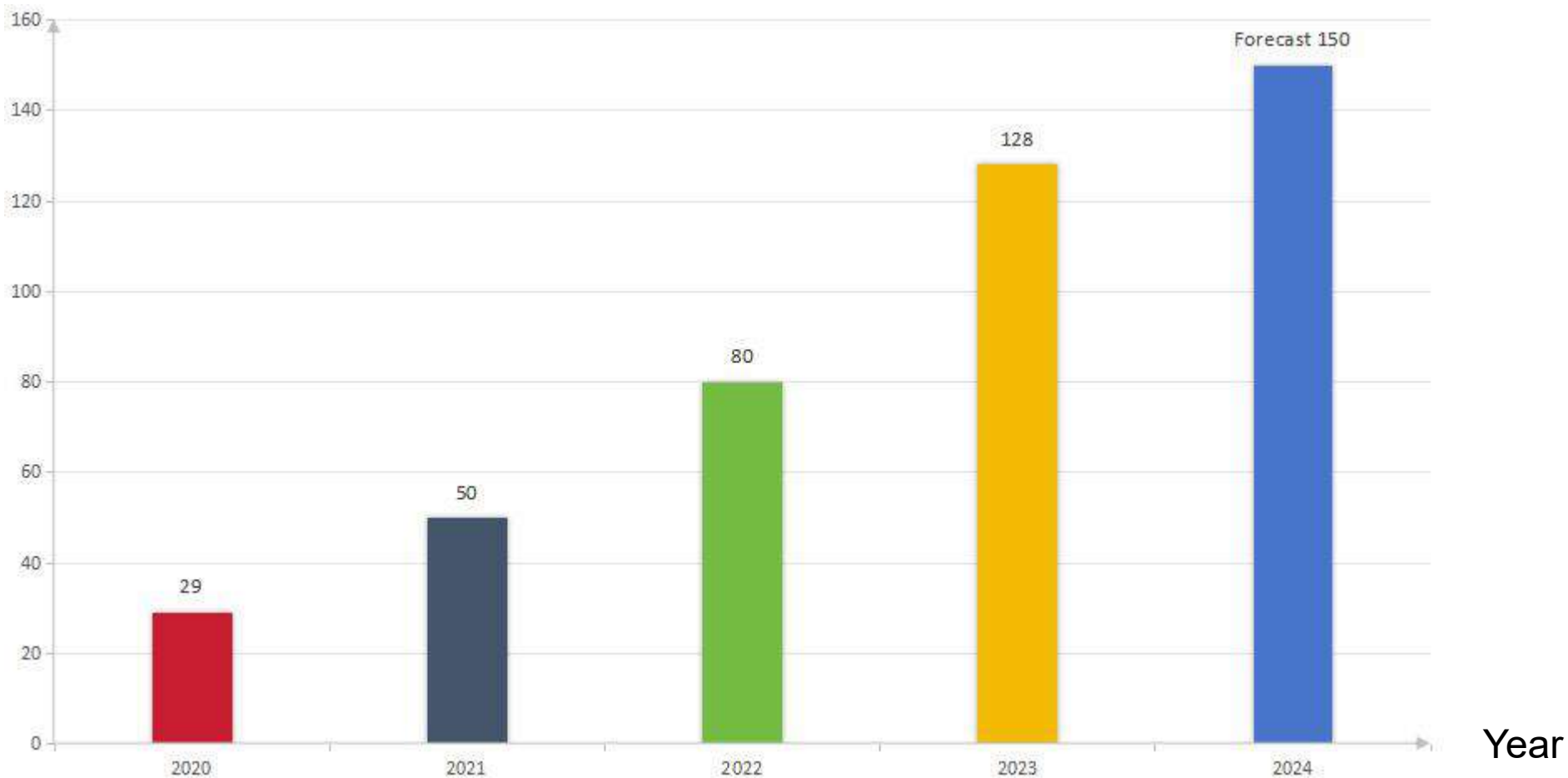
Turkey



Percentage of Sales



Million (USD)





CORPORATE
SERVICES



BOSCH

Honeywell

霍尼韦尔



Joyoung 九阳



intelbras



Y3F



1

Advantages of Patent Type

- Increased the Dielectric Strength and decreased the Magnetic Lose,
- Increased the Shock Resistance and be more stable
- Low Power Consumption of 0.2W with small size

Y90



2

Advantages of Paten Type

- Increased the Dielectric Strength up to 4,000 Vac,
- Increased the stability and reliability,

Y14F



3

Advantages of Patent Type

- More sensitive than normal type,
- More stable and reliable during work.

Y32F



4

Advantages of Patent Type

- More sensitive than normal type,
- More stable and reliable during work.

企业资质
ENTERPRISE QUALIFICATION

企业荣誉

品牌从企业快速发展、企业的成长、产品的更新、产品和服务的重要体现







铸就品牌

第一等品质，第二等价格
第一等品质，第二等价格
第一等品质，第二等价格
第一等品质，第二等价格



企业资质
ENTERPRISE QUALIFICATION




元则继电器
YUANZE RELAY

企业资质
ENTERPRISE QUALIFICATION

专利认证

新颖的高新技术
独到的性能特点
实惠于民，同享价值



企业资质
ENTERPRISE QUALITY

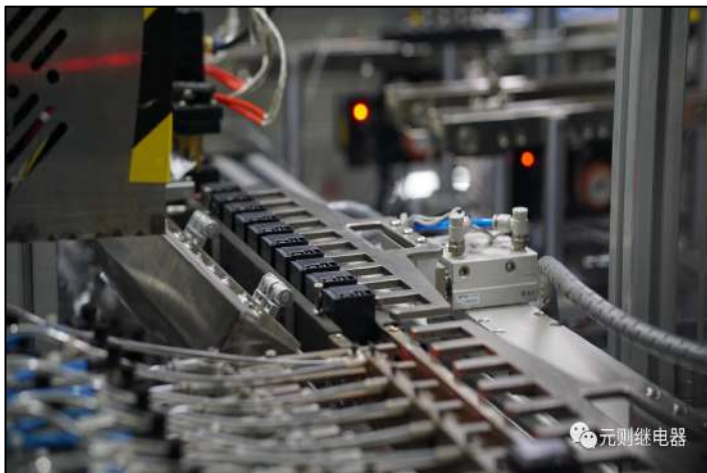
权威认证

权威认证，共享价值
国际通行的产品质量保证模式
中国与全球接轨的必然选择





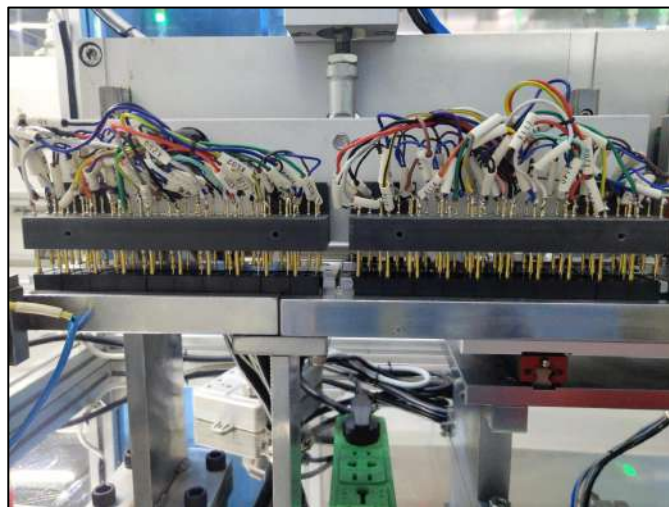






Appearance Testing
Equipment

Through automatic photo scanning and measurement, products with appearance defects such as damaged shells, crooked feet, and glue heights are screened out.



Aging Testing
Equipment

During production, under the condition of no load, the mechanical on-off is 200 times to test the life and stability of the product.





_Pitu



德国·慕尼黑
元则继电器展台



- Reinvest in 2024 not less than percentage of 75% of the profit in the year 2023, and not less than 50% of profit of last year after 2024;
- Increased by 8 Automatic Assembly line in 2024;
- Increase the Production Capacity up to 2 Million pcs per day by the end of 2024;

展望未来

Thanks for your time

